

Judy, Doralee, Violet,  
Ensemble

# I JUST MIGHT

4

**CUE:**

**VIOLET:** "Keep working on it." (GO)

**JUDY:** "You're so nice."  
(GO m.7)

5 **Gently** 6 7 **rit.** 8 **JUDY:**

What to do— and where to

9 **A tempo** ♩ = 94 10 11 12

start? Things are fal - ling all— a-part. Try - ing hard to move a -

13 14 15 16

head, But keep los - ing ground in— stead. Still I have to take a

17 18 19 20

chance, Put ting fear and doubt a side.— Had no warn - ing in ad -

21 22 23 24

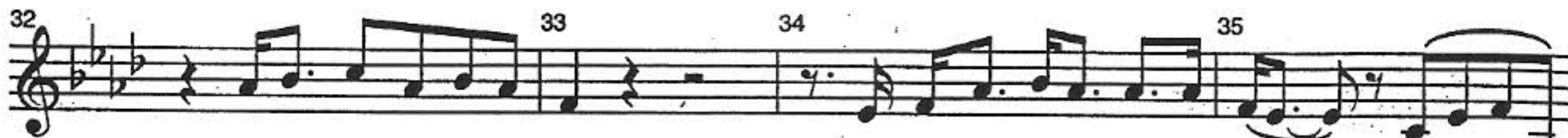
vance, Noth - ing left— to do but— try.— And I just might make it

25 **Gently Driving** 26 27

work. I just might make it af - ter all,—



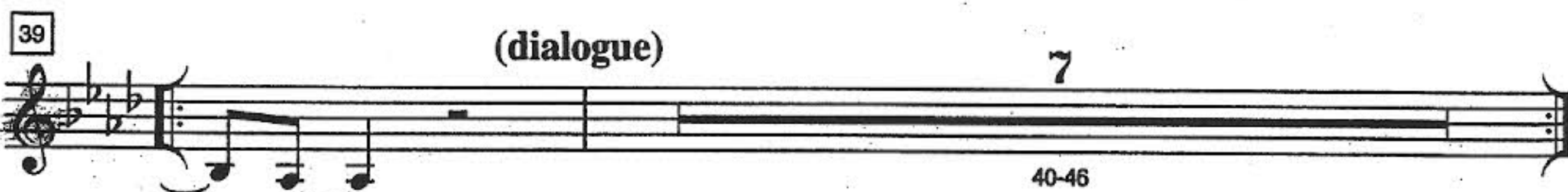
I just might rise a-bove the hurt,                    though I suf-fered quite a fall.—



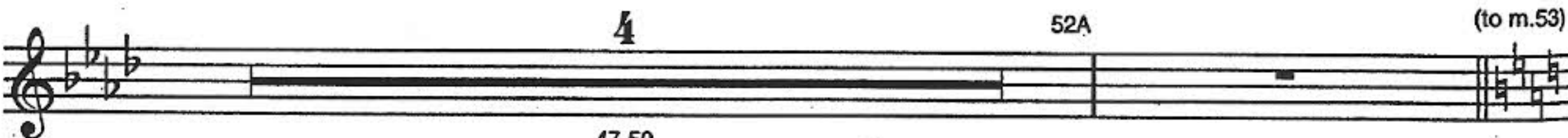
But I have to get a grip,                    and hold on to it like a vice,—    hmm,—



have to face the fal-len—chips.                    I just might make it,    I just



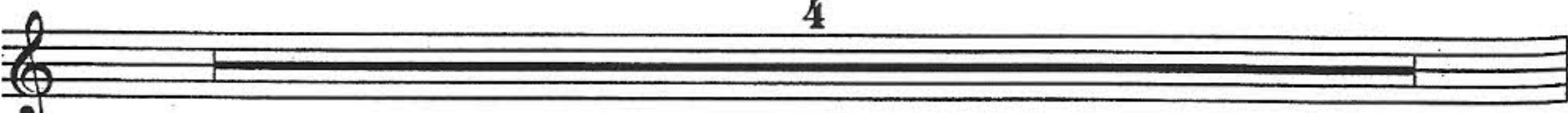
might.—



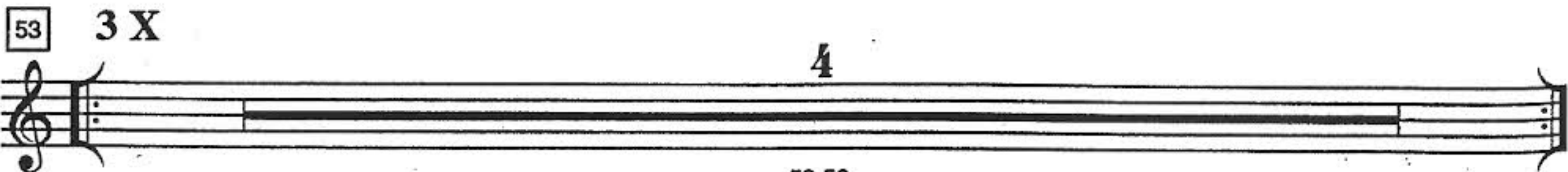
47-50

52A

(to m.53)



52B-52E



53-56

#4 - I Just Might